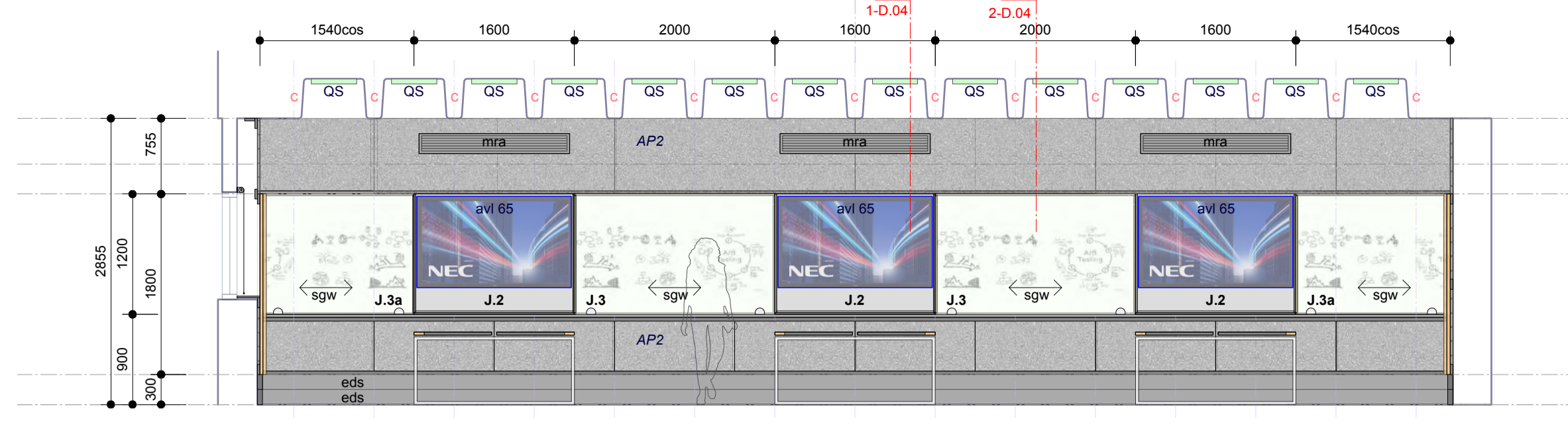
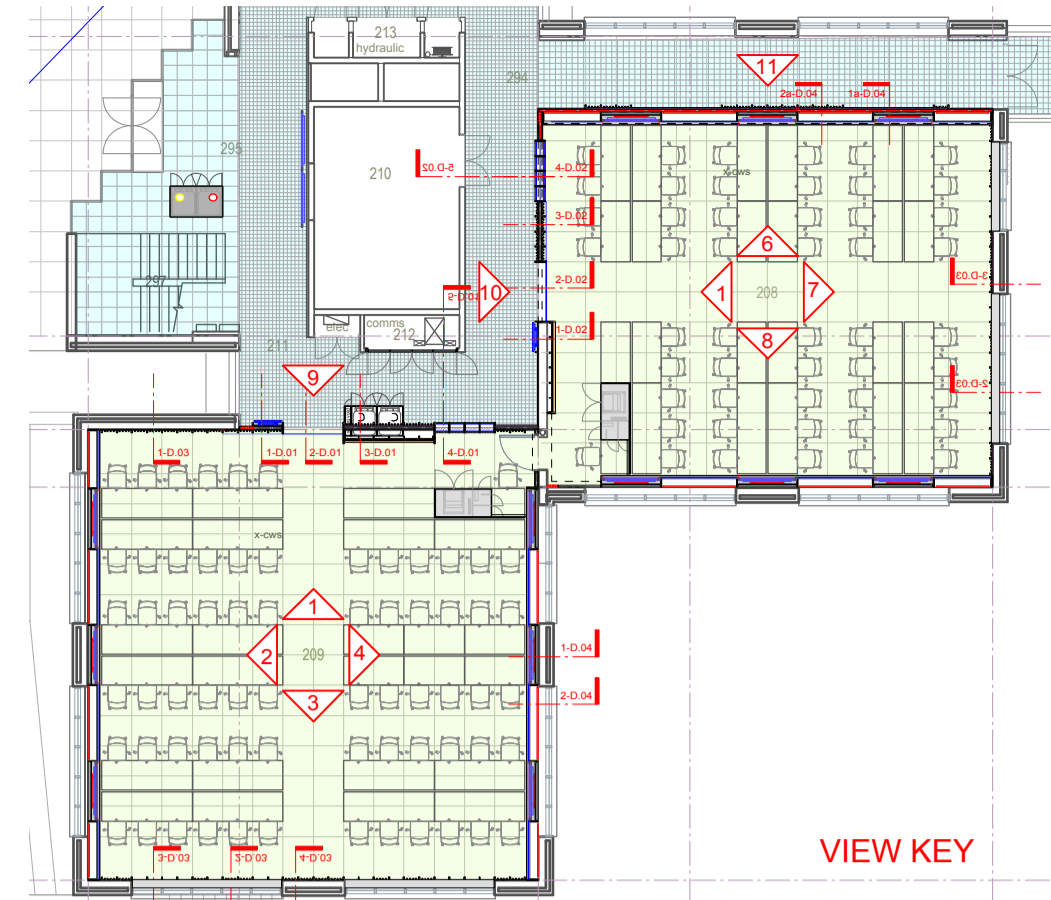


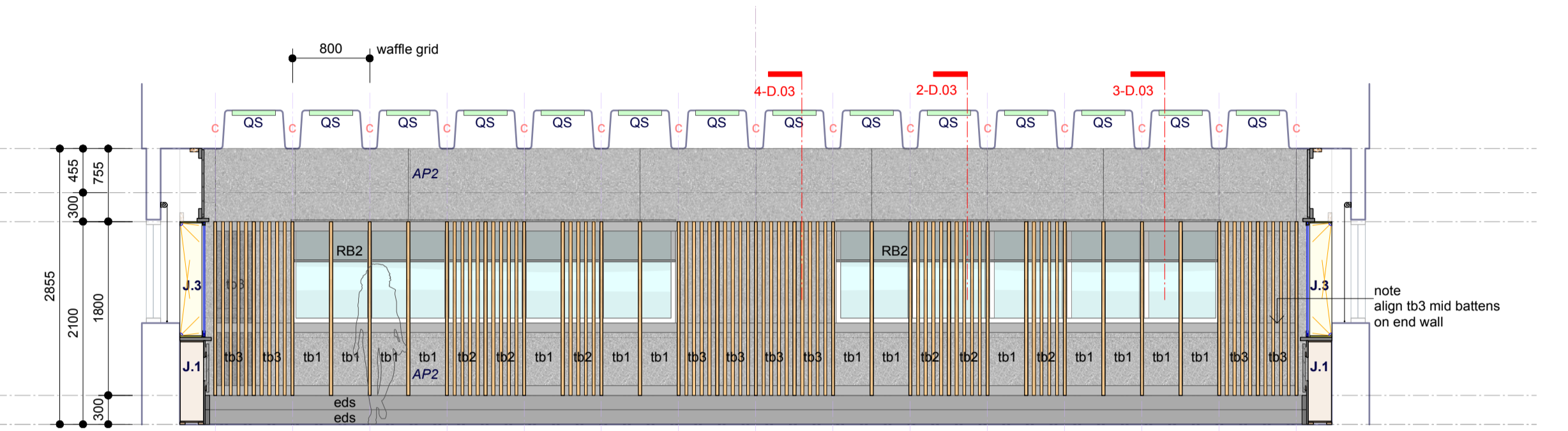
1 ELEVATION : Room 209
Scale: 1:50



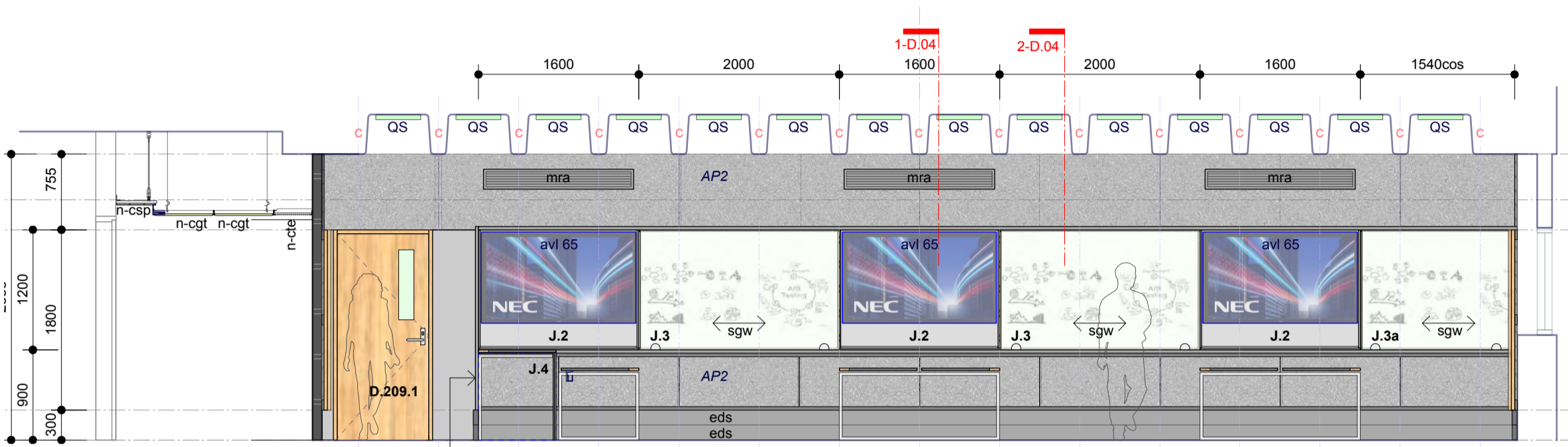
2 ELEVATION : Room 209
Scale: 1:50



VIEW KEY

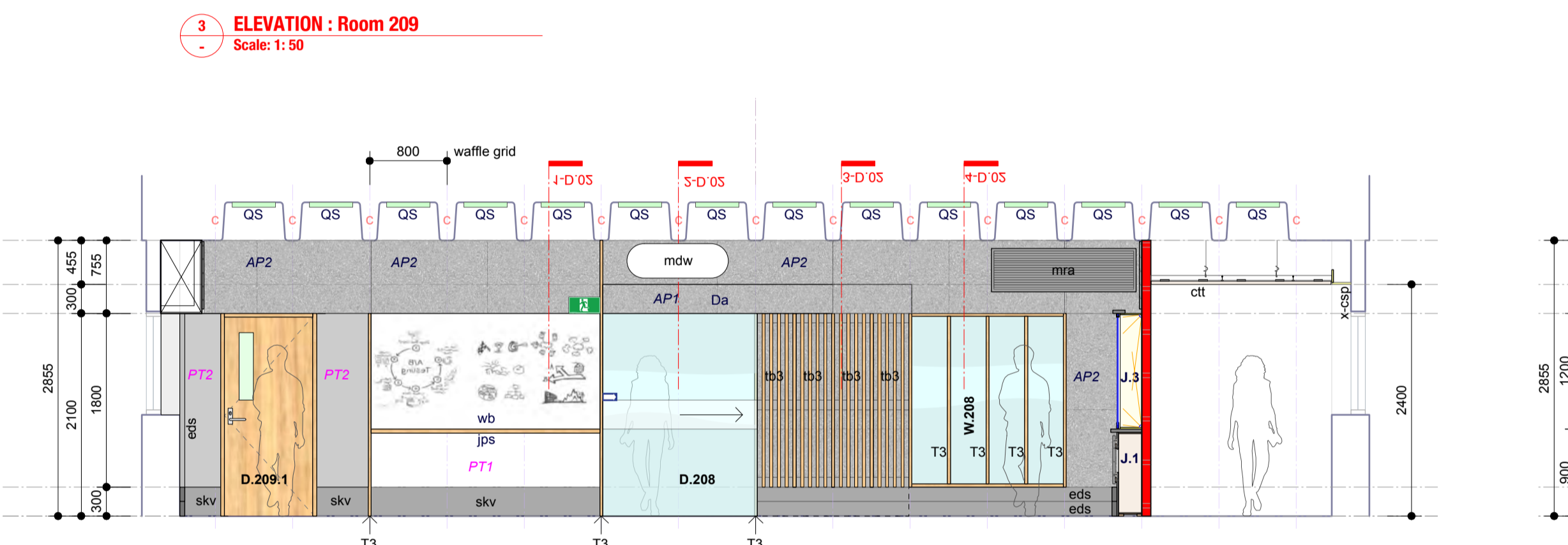


3 ELEVATION : Room 209
Scale: 1:50

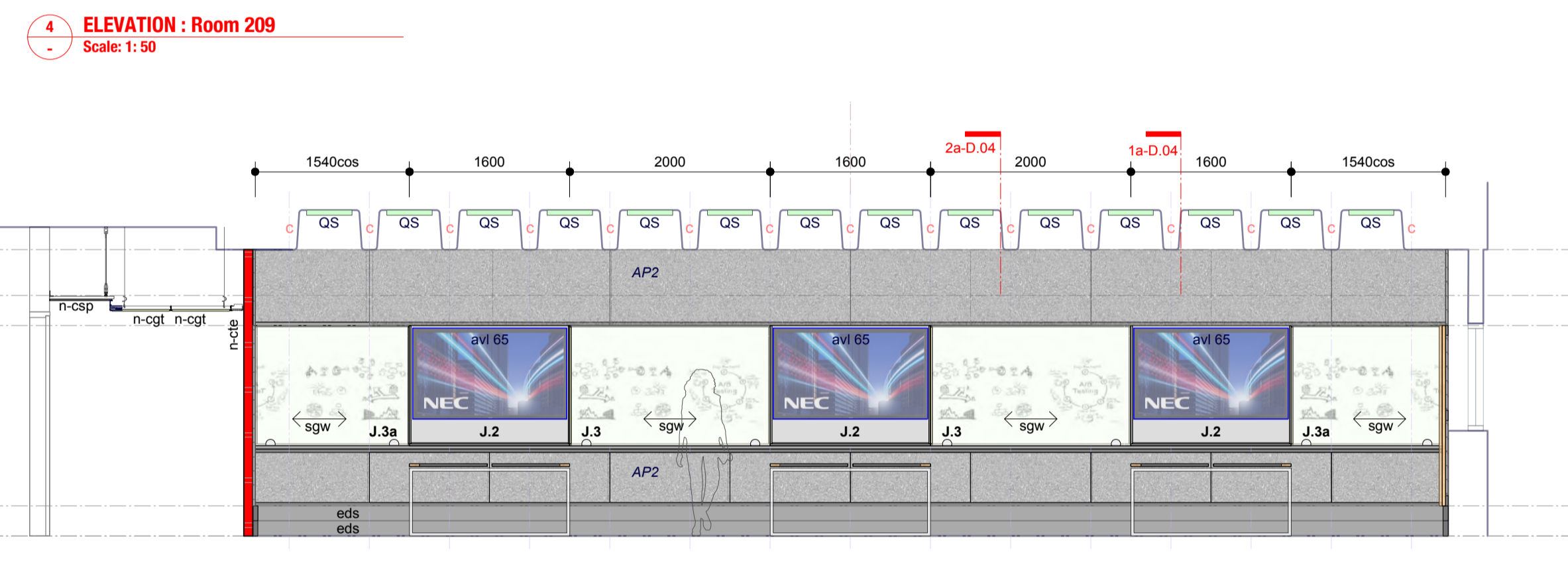


4 ELEVATION : Room 209
Scale: 1:50

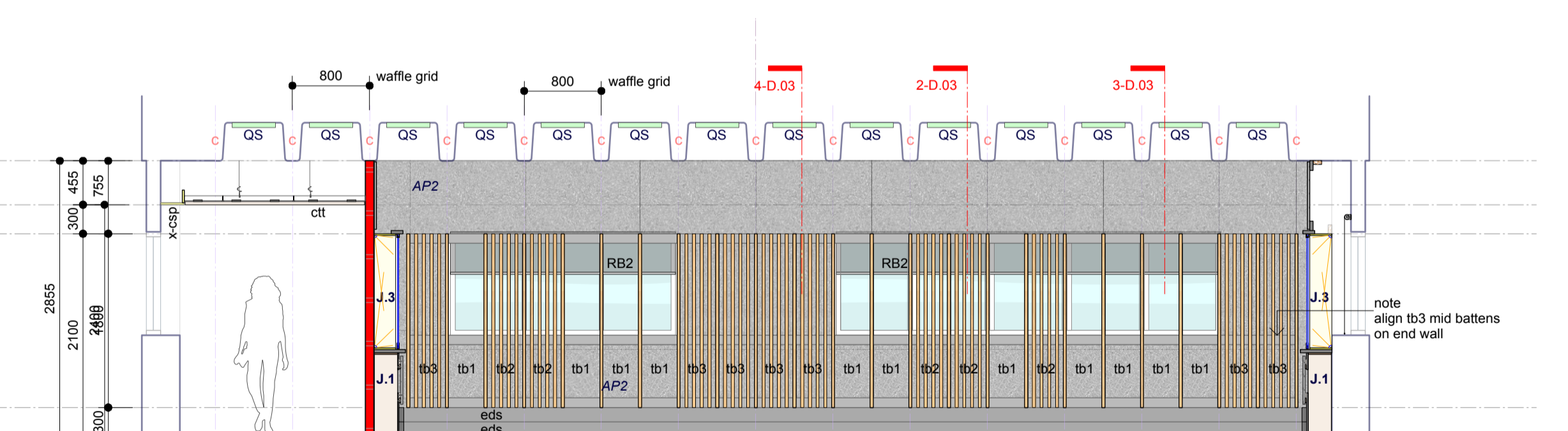
- KEY**
- Prefix items
 - d - demolish item noted
 - n - new item (noted for clarity where ambiguous)
 - s - salvage item noted and issue to principal for storage
 - sr - salvage and reinstate item noted in new position
 - x - existing item (noted for clarity where ambiguous)
 - italic text refer to finishes schedule for details
li>
 - AP1 Acoustic panel 3, Autex Cube 12mm colour "Empire", mechanical or adhesive fix refer details, where adhesive fix per manufacturers instructions
 - AP2 Acoustic panel 2, Autex Cube 24mm colour "Empire", mechanical or adhesive fix refer details, where adhesive fix per manufacturers instructions
 - as adjustable shelf at 50mm centres vertically
 - avc AV computer, supply and mount by Builder, Commission by UQ ITS, refer AV section in Specification
 - avl AV lcd screen, supply and mount by Builder, Commission by UQ ITS, refer AV section in Specification
 - avr AV rack, supply and mount by Builder, Commission by UQ ITS, refer AV section in Specification
 - bin bin, whee bin by UQ
 - ctg ceiling 600x600 suspended grid and tile refer finishes schedule
 - ch# ceiling height above floor level
 - cos check dimensions on site
 - cpi# carpet (type if where new), refer finishes schedule
 - csp ceiling set plasterboard pain PT3
 - csp ceiling set plasterboard pain PT3
 - cte existing terrazzo floor tiles 400x400, refer PC sum for cleaning
 - ctf existing terrazzo floor tiles 150x150, refer PC sum for cleaning
 - ctt ceiling, timber batten lift and shift tile
 - cws ceiling exposed waffle slab, patch and make good where affected by demolition, Paint all waffle and plastic insert strips in room 208 209 PT3
 - Da Door Auto Opening slider, Dorma EL301 operator, refer door schedule
 - DF1 drink fountainZip CHILL FOUNTAIN ADULT CFB140FA, installed in location of former drink fountain (refers future level 3 works only)
 - ebg electrical break glass escape button, refer electrical
 - ecp electrical cables in partition, refer electrical
 - ecd electrical comms tray, refer electrical
 - edr electrical communications data rack, refer electrical
 - eds electrical ducted skirting (Black), refer electrical
 - efb electrical floor box, refer electrical
 - efd electrical floor duct existing retained, location to be confirmed by builder
 - elf electrical light fitting, refer electrical
 - em entry matting
 - eml electrical magnetic lock, refer electrical
 - epb electrical push button door opener
 - epc electrical proximity card reader, refer electrical
 - ept electrical power tray, refer electrical
 - esb switchboard, refer electrical
 - ess electrical soft wiring starter socket, refer electrical
 - F # Furniture Type #, supply by UQ, refer furniture schedule
 - hrl fire hose reel (existing)
 - hsk sink and associated plumbing
 - hyd fire hydrant (existing)
 - ip infill panel, measure and scribe on site
 - J # Joinery Number (k when existing), refer details
 - jps joinery pen shelf 90x42 tasmanian oak solid shelf, 30% satin clear finish
 - lk satin chrome flush lock, 0017 Hafele barrels keyed alike
 - mar mechanical air register refer mechanical documents
 - mdw mechanical duct work, also refer mechanical
 - mg make good surface where affected by demolition
 - mrg mechanical refrigerant pipes, refer mechanical
 - mpb plasterboard, set plaster joints
 - pn Partition Existing lighthouse
 - PN# Partition New # type refer partition schedule
 - PSE plaster set edge, tear off bead or setting angle
 - PT# paint colour #, refer finishes schedule
 - QS Acoustic panel 1, 450x450x50mm Autex Quietpace, Nude White, adhesive fix to ceiling slab as per manufacturers instructions + 1 mechanical fixing per panel
 - RB# Roller blind, refer finishes schedule
 - sgu signage supplied and installed by UQ
 - sgw sliding glass whiteboard, refer details
 - skv vinyl skirting black, 3000mm FLAT, (NOT feather edge)
 - tb# timber batten modules 1800x x 400centres, refer elevations and details
 - wb Vitreous Enamel Steel whiteboard, Just Boards LX800 slim 4mm white powdercoated frame, check custom dimension) on site
 - WS.# workstation number, By Builders workstation contractor, refer details
 - wsc workstation cable tray CMS 50x50 basket on 100mm bracket
 - wsp workstation power module CMS Centra CERC02U - 2 x Rotating GPO w/ 2 X USB (1 x Type B, 1 x Type C)



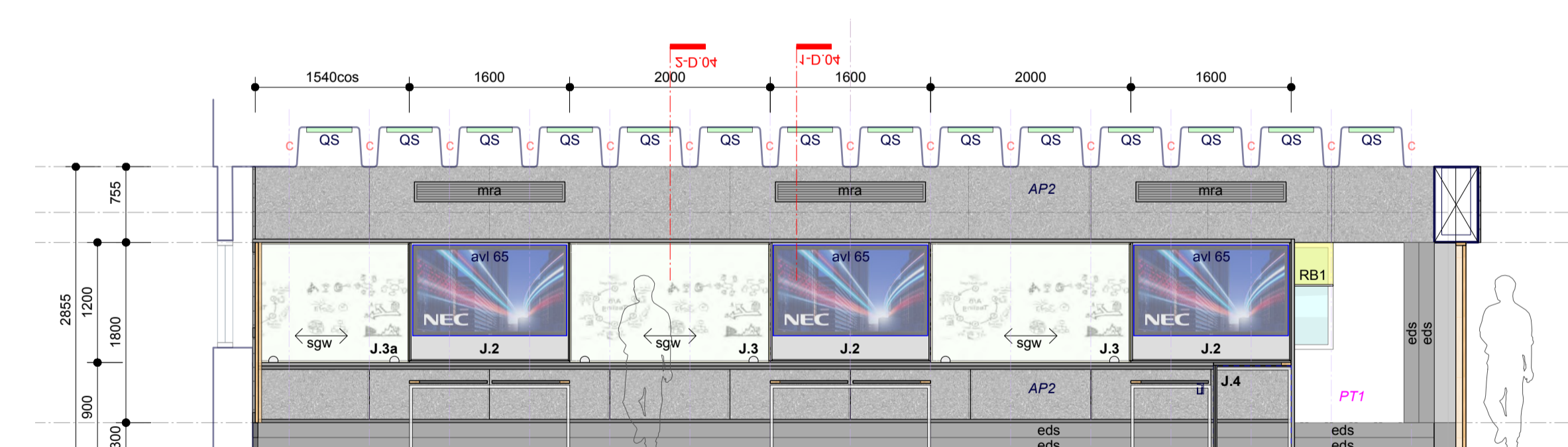
5 ELEVATION : Room 208
Scale: 1:50



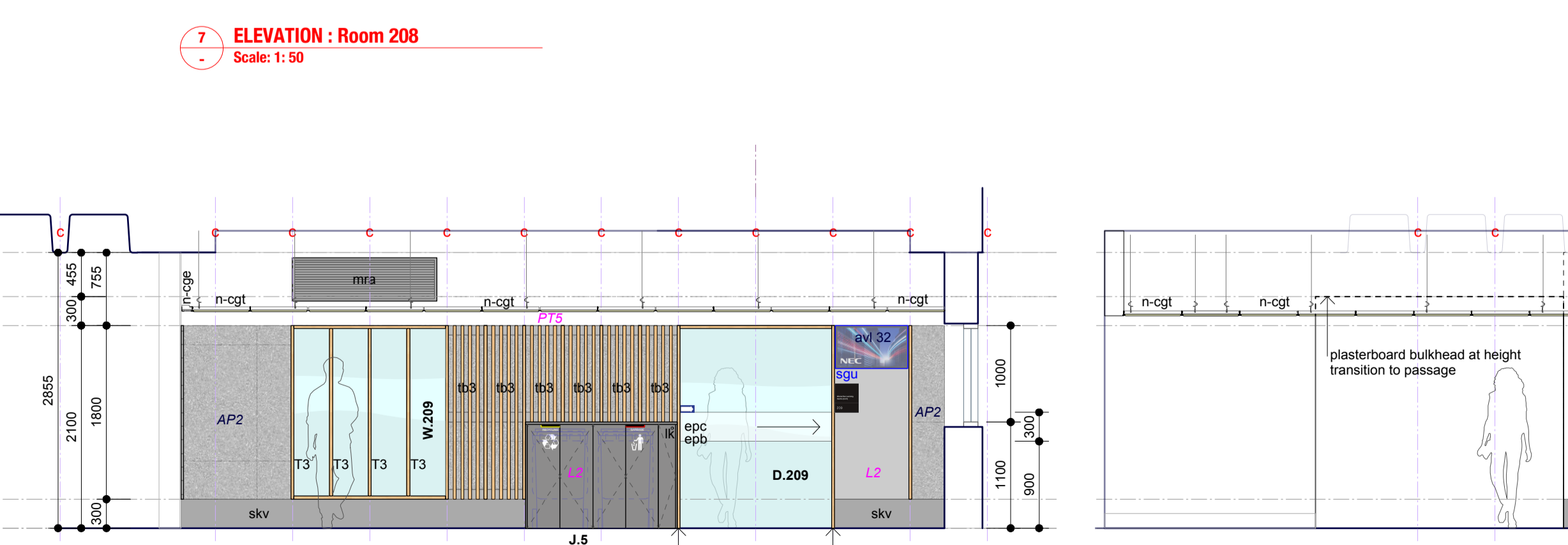
6 ELEVATION : Room 208
Scale: 1:50



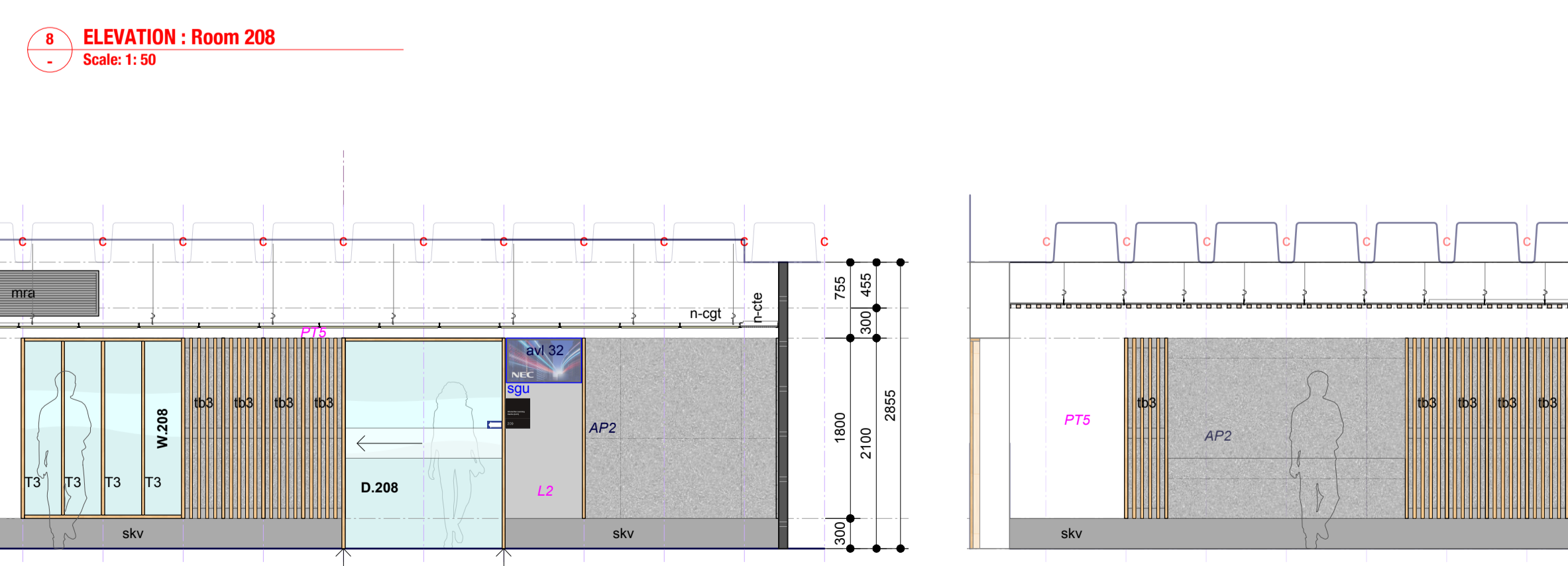
7 ELEVATION : Room 208
Scale: 1:50



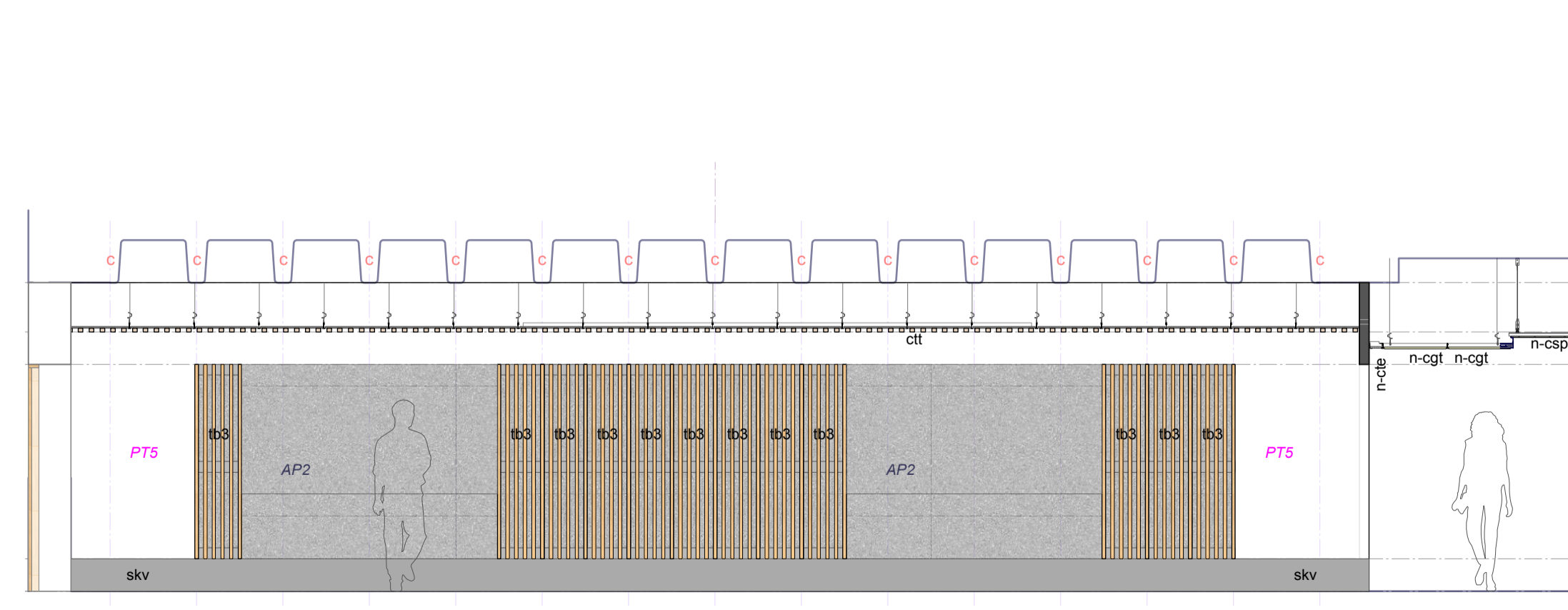
8 ELEVATION : Room 208
Scale: 1:50



9 ELEVATION : Room 209 Facade
Scale: 1:50



10 ELEVATION : Room 208 Facade
Scale: 1:50



11 ELEVATION : North Passageway
Scale: 1:50