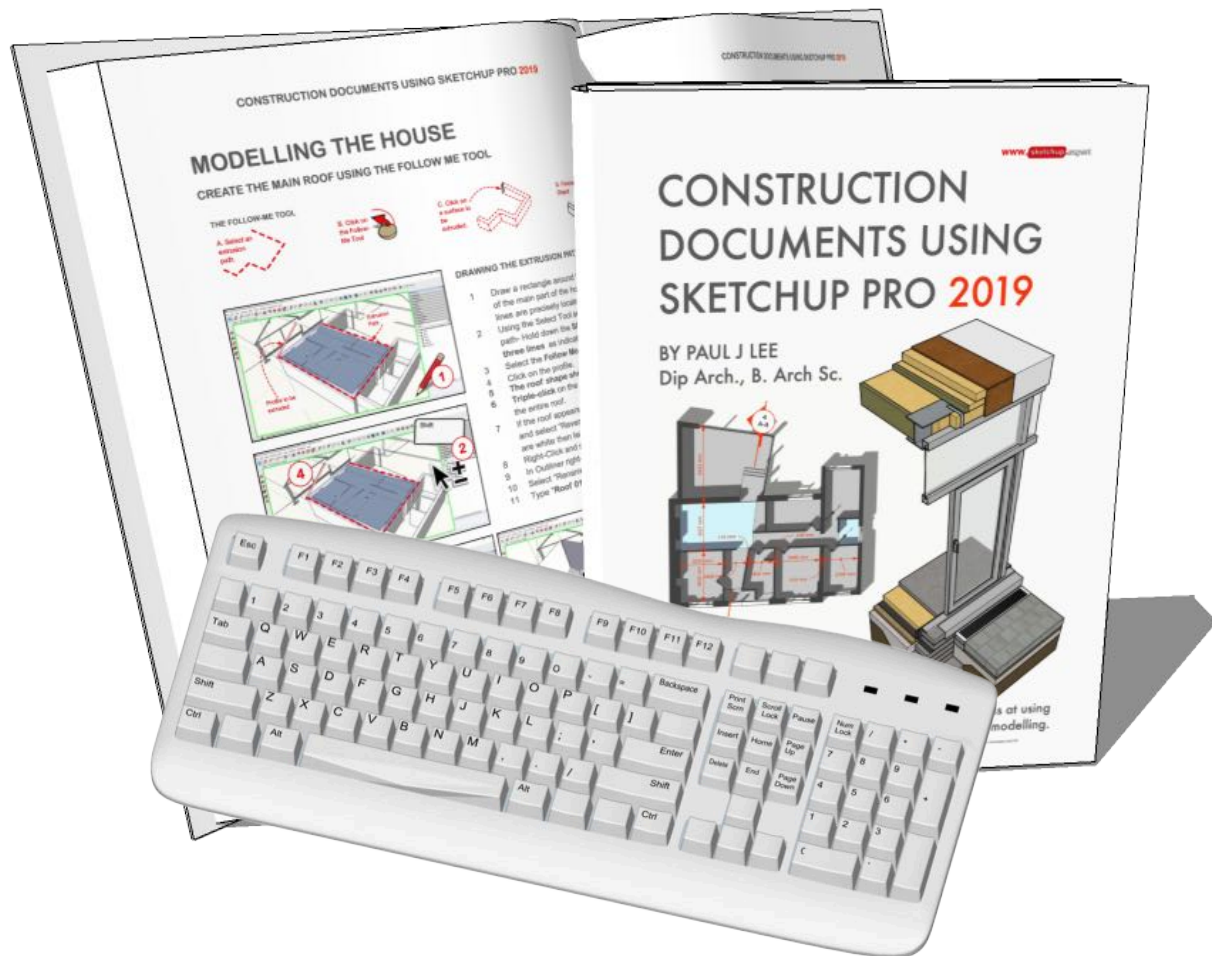


5 "KILLER KEYSTROKES" FOR SKETCHUP PRO 2019

BY PAUL J LEE

Dip Arch., B. Arch Sc.

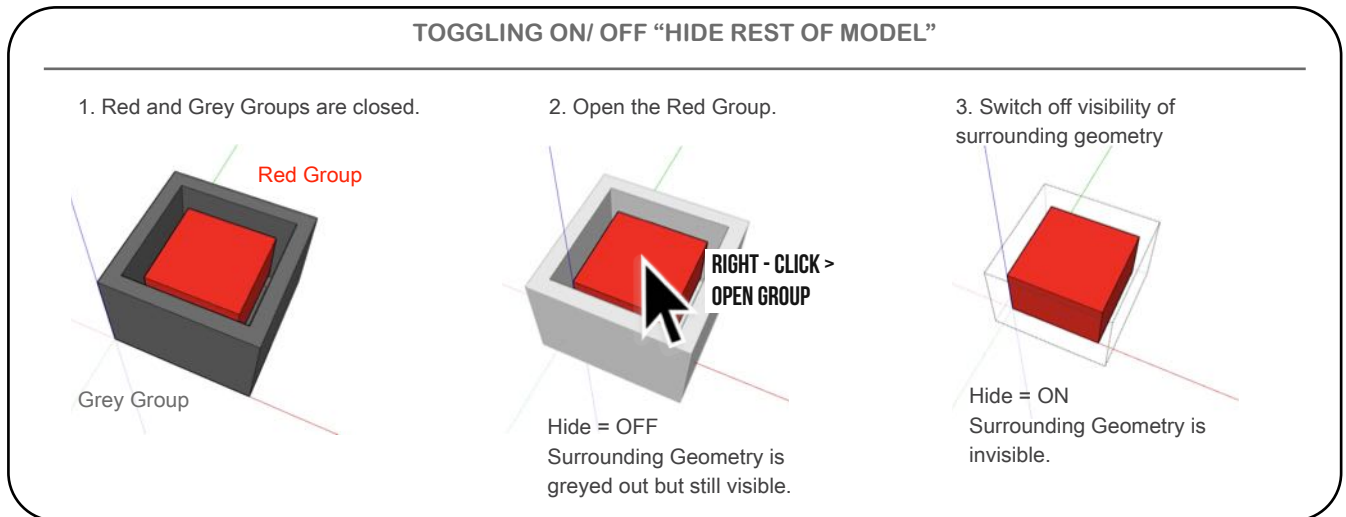
www.sketchup.expert



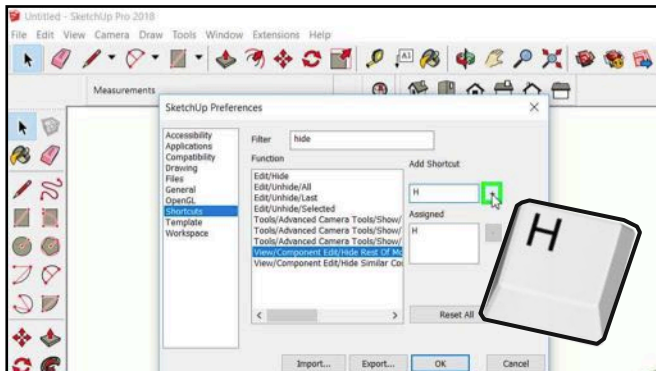
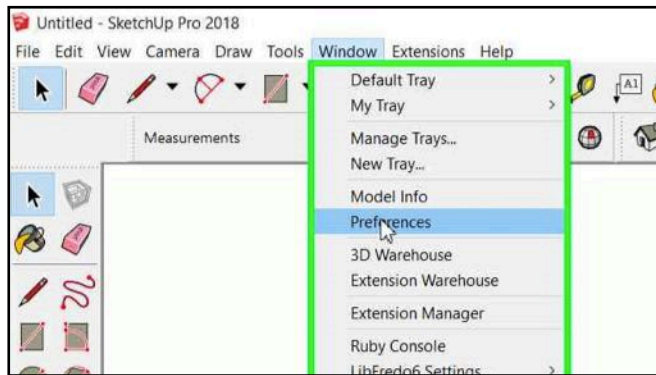
Extract from the short project-based course which increases your effectiveness at using SketchUp to give you a truly professional approach to modelling.

“POWERFUL SHORTCUT No. 1”: HIDE

SketchUp has the ability to instantly turn on and off visibility for geometry outside of an Open Group. This is hugely advantageous and greatly increases modelling speed.



Let's create a shortcut for this function.

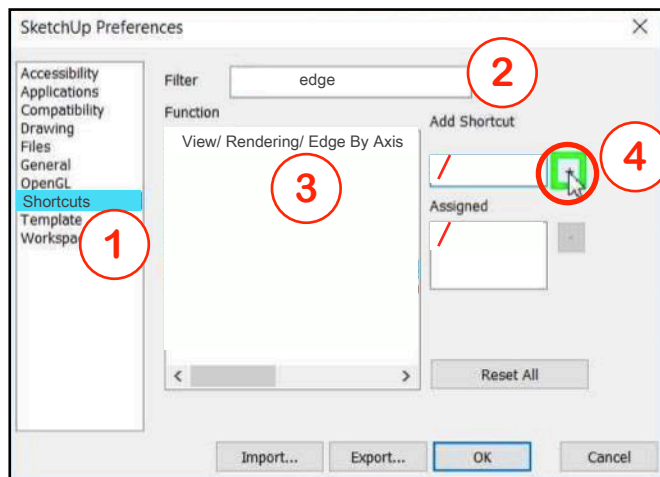


1. Select **Window > Preferences > Shortcuts**. (SketchUp > Preferences > Shortcuts for Mac)
2. Type “hide” into the filter search.
3. Click on the selection called: **View > Component Edit > Hide Rest of Model**.
5. Type “H” into the “Add Shortcut” Dialogue and click on the “+” button.
6. You will be asked if it's OK to override an existing function. Select “Yes”.

Now the shortcut is ready. Test the effectiveness of the shortcut by opening any group in your model. Hit the “H” key and see how the surrounding geometry disappears. To make it reappear just hit “H” again. We're going to use this shortcut in our modelling from here on.

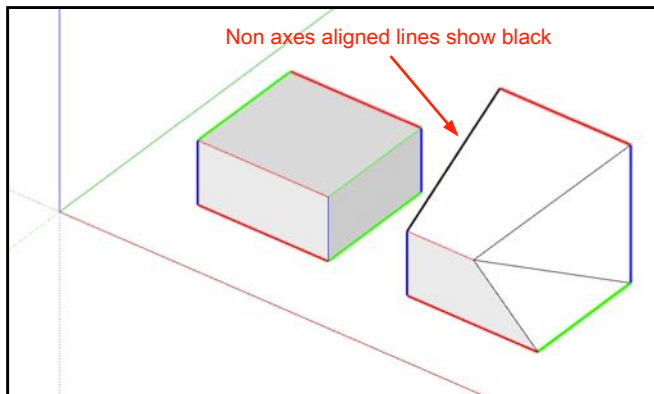
CREATE “POWERFUL SHORTCUT No. 2”

SketchUp allows you to examine which lines are conforming to the current axes. **Model faces need to be precisely parallel for faces and lines to interact correctly.** Examining lines using the following method is a convenient and quick way of ensuring that lines and surfaces are parallel with each other.



Set up the shortcut through Preferences (On a Mac: SketchUp/ Preferences)

1. Select **Window/ Preferences/ Shortcuts**. (SketchUp > Preferences > Shortcuts for Mac)
2. Type “edge” into the filter search.
3. Click on the selection called: **View/ Rendering/ Edge/ By Axis**
4. Type “/” into the “Add Shortcut” Dialogue and click on the “+” button.
5. If you’re asked if it’s OK to override an existing function. Select “Yes”.



Pressing the “/” shortcut shows up all lines that are parallel to an axis. Pressing it again turns the lines back to normal.

Now the shortcut is ready. Test the effectiveness of the shortcut by hitting the the “/” key and see how the axis-aligned lines change colours.

Lines parallel to red axis turn red, green axis green, blue etc.

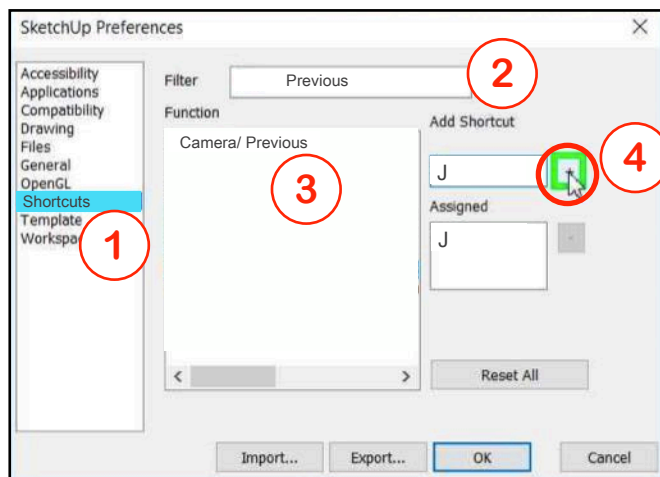
Lines that are not aligned to an axis will show black.

To make the lines return to their normal appearance, just hit “/” again.

Use this shortcut to check your model especially where you’re finding geometry tricky to deal with.

CREATE “POWERFUL SHORTCUT No. 3”

SketchUp saves 5 previous locations from which you were viewing the model. The way to cycle backwards through these locations is via **Camera > Previous**. This is very useful in a number of ways which will become apparent as we proceed.

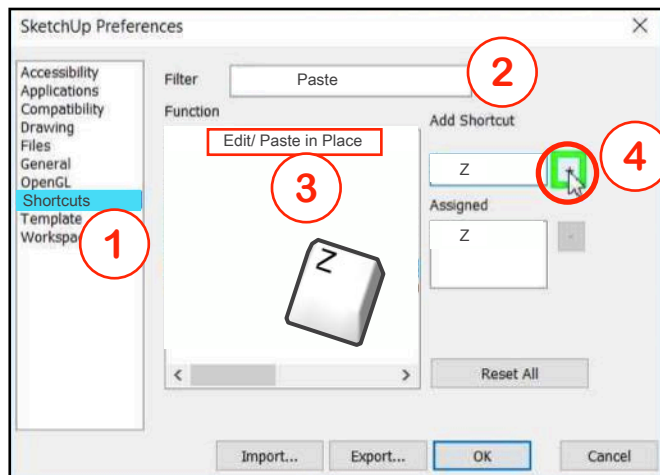


1. Select **Window/ Preferences/ Shortcuts**. (SketchUp > Preferences > Shortcuts for Mac)
2. Type “**Previous**” into the filter search.
3. Click on the selection called: **Camera/ Previous**
4. Type “**J**” into the “Add Shortcut” Dialogue and click on the “+” button.
5. If you’re asked if it’s OK to override an existing function. Select “Yes”.

Now the shortcut is ready. Test the effectiveness of the shortcut by hitting the the “J” key and see how the 5 previous views are displayed in sequence.

CREATE “POWERFUL SHORTCUT No. 4”

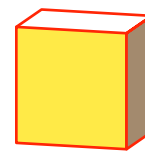
SketchUp has a special paste function that is specific to 3D modelling context. It allows us to copy an object and paste it exactly into position. We’re now going to create a shortcut for this using the letter “Z”.



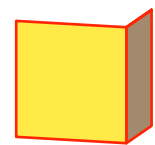
1. Select **Window/ Preferences/ Shortcuts**. (SketchUp > Preferences > Shortcuts for Mac)
2. Type “**Paste**” into the filter search.
3. Click on the selection called: “**Edit/ Paste In Place**”
4. Type “**Z**” into the “Add Shortcut” Dialogue and click on the “**+**” button.
5. If you’re asked if it’s OK to override an existing function. Select “**Yes**”.

Now our shortcut is ready. Test it’s effectiveness:

- 1 Start a new SketchUp file.
- 2 Create a box.
- 3 Select and copy one of it’s surfaces (CTRL + C)
- 4 Start another SketchUp file.
- 5 Press “Z”
- 6 The surface should be in the exact same place in the new file.
- 7 Test this by copying another of the surfaces in the same way.



SketchUp File A

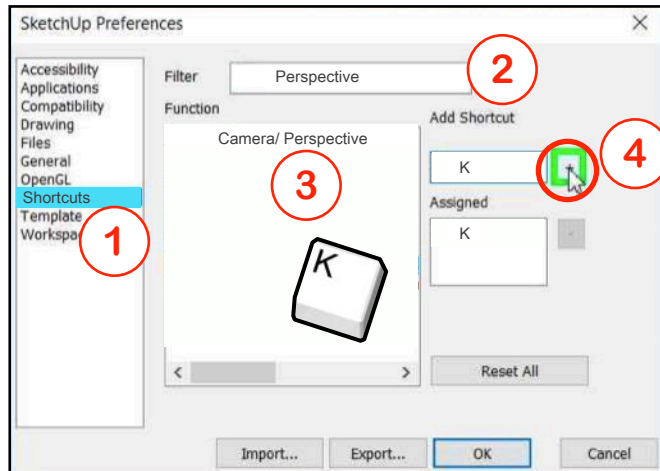


SketchUp File B

This shortcut is used constantly throughout your day-to-day modelling. Note that it can also be used between different files. One useful technique for modelling a large SketchUp file is to take a piece of geometry and paste it into a new file.

CREATE “POWERFUL SHORTCUT No. 5”

SketchUp generally works best when viewing your model in perspective. We’re going to set you up with a shortcut that toggles between orthographic and perspective.



1. Select **Window/ Preferences/ Shortcuts**. (SketchUp > Preferences > Shortcuts for Mac)
2. Type “**Perspective**” into the filter search.
3. Click on the selection called: “**Camera/ Perspective**”
4. Type “**K**” into the “Add Shortcut” Dialogue and click on the “+” button.
5. If you’re asked if it’s OK to override an existing function. Select “Yes”.



Click on
“Section A -
A” or Plan/
Elevations.

Now our shortcut is ready. Test it’s effectiveness:



Hit “K”.

Click on any orthographic scene in your model (Plan/ Section/ Elevation)
Hit the “K” key.
Notice how the drawing becomes a perspective.
Hit the “K” key again.
You’re back to Parallel View.



Hit “K” again.

This shortcut will be used constantly throughout your day-to-day modelling.

Complete List of Keyboard Shortcuts



- Select (**Spacebar**)
- Paint **B**ucket
- **R**ectangle
- **C**ircle
- **M**ove
- Rotate (**Q**)
- **S**cale (We use “**Y**” for this- Not the standard shortcut.)
- **T**ape Measure
- **O**rbit (We use this key for “**Offset**”- The mouse is used for Orbit.)
- **Z**oom (This key we use for “Paste in Place” as this is a mouse function.)
- Eraser (We use “**X**” for this- Not the standard shortcut.)
- Line (We use “**E**” for this- Not the standard shortcut.)
- **A**rc
- **P**ush/Pull
- **O**ffset
- Zoom Extents (We use “**Q**” for this- Not the standard shortcut.)

Thanks to briankb on SketchUp Forums for this list.



THE MOST UP-TO-DATE TECHNICAL SKETCHUP COURSE EVER PUBLISHED

Construction Documents Using SketchUp Pro 2019 borrows from 15 years of experience in using and teaching SketchUp to professionals from multiple backgrounds.

Paul Lee has created the only hands-on course that demonstrates how to go step-by-step from a design to a set of documents.

Visit SketchUp.Expert today or visit SketchUcation.com to purchase your copy of this groundbreaking manual.

Don't forget to visit the Resources Page at <https://www.Sketchup.Expert> to get new tips, downloads and updates.